

# MONTHLY MEMBERSHIP PROGRESS REPORT

LOCATION CALIFORNIA

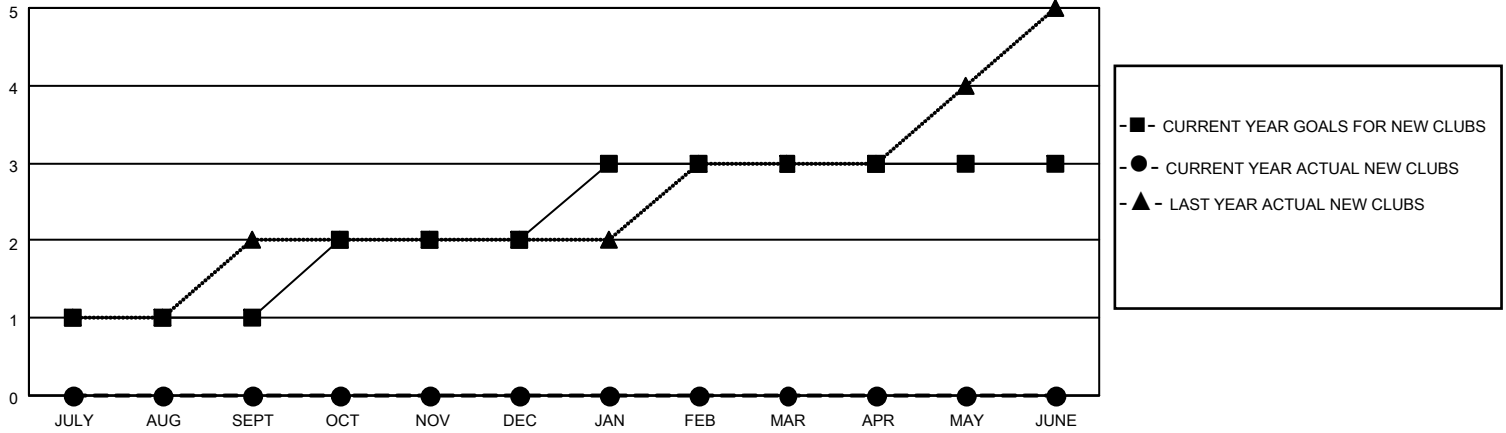
District 4 C4

Results as of: 5/31/2023

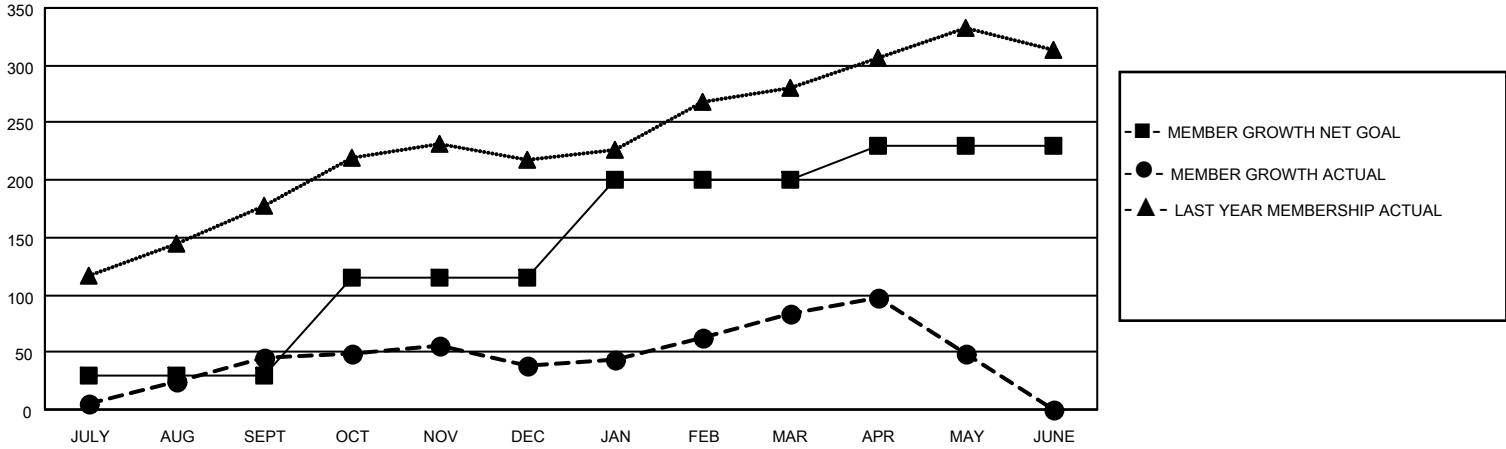
Clubs			
RESULTS FOR 2022-2023			
QUARTER	NEW CLUB GOAL	NEW CLUBS	DROPPED CLUBS
JULY/AUG/SEPT	1	0	0
OCT/NOV/DEC	1	0	1
JAN/FEB/MAR	1	0	0
APR/MAY/JUNE	0	0	0

Members			
RESULTS FOR 2022-2023			
QUARTER	MEMBER GROWTH NET GOAL	MEMBER GROWTH ACTUAL	DROPPED MEMBERS ACTUAL (including transfers)
JULY/AUG/SEPT	30	92	44
OCT/NOV/DEC	85	76	76
JAN/FEB/MAR	85	86	28
APR/MAY/JUNE	30	41	72

**GOALS AND ACTUAL NEW CLUBS CUMULATIVE**



**GOALS AND ACTUAL MEMBERS CUMULATIVE**



DROPPED CLUBS: 1	
<b>DROPPED MEMBERS</b>	
DECEASED	14
CLUB CANCELLED	7
OTHER	199
<b>TOTAL</b>	<b>220</b>

50 CLUBS OF 59 ADDED 1 OR MORE NEW MEMBERS

[CLICK HERE FOR CUMULATIVE MEMBERSHIP DATA](#)

<u>GENDER DISTRIBUTION</u>	
MALE	966 (49.90%)
FEMALE	969 (50.05%)
NON BINARY	0 (0.00%)
PREFER NOT TO ANSWER	1 (0.05%)
TOTAL FAMILY UNIT MEMBERS	
	292
FAMILY MEMBERS PAYING HALF DUES	
	159